

## Jason Maedl

---

**From:** Jason Maedl  
**Sent:** Thursday, December 11, 2008 13:42  
**To:** AllUsers  
**Subject:** layerONE FTP Instructions as of 12-11-08  
**Follow Up Flag:** Follow up  
**Flag Status:** Red

Thank you for choosing layerONE.

Our FTP service is NOT compatible with Internet Explorer or other web-based access. The use of the Windows Explorer interface IS supported; however, we recommend the use of a dedicated FTP client such as WSFTP or Fetch. Information for connecting via either method is provided in this document.

Once uploaded, please send an email to [graphics@layer1media.com](mailto:graphics@layer1media.com) containing the file name and reference information.

Contact information for troubleshooting is provided at the end of this document.

Please note that the username and password are case sensitive.

For dedicated FTP clients:

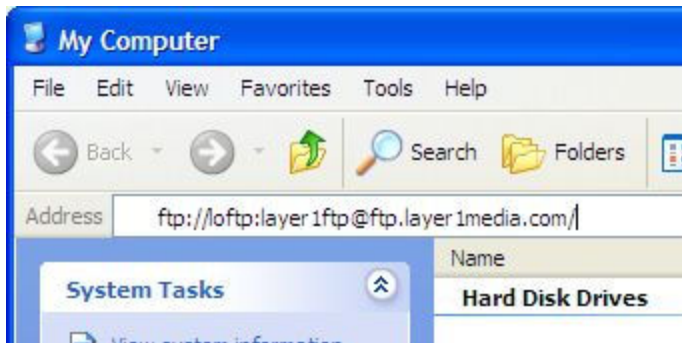
host: ftp.layer1media.com  
username: loftp  
password: layer1ftp

Using Windows Explorer:

Navigate to "My Computer":



Select the "My Computer" text in the Address Bar and delete it.  
Type "ftp://loftp:layer1ftp@ftp.layer1media.com" (without the quotes) in the Address Bar, and press Enter:



The connection to the FTP server will be established and the contents will be displayed in this window. Navigate to the desired location within the FTP site and drag and drop files to upload.

If you have questions or encounter problems using these methods, please use the contact information below.

Thanks for using layerONE!



Jason Maedl  
Director of Media Services  
585.756.2950 x111  
[jmaedl@layer1media.com](mailto:jmaedl@layer1media.com)

---

1999 Mount Read Boulevard  
Rochester, NY 14615  
585.756.2950 voice  
877.4LAYER1 toll free  
585.756.2949 fax

---